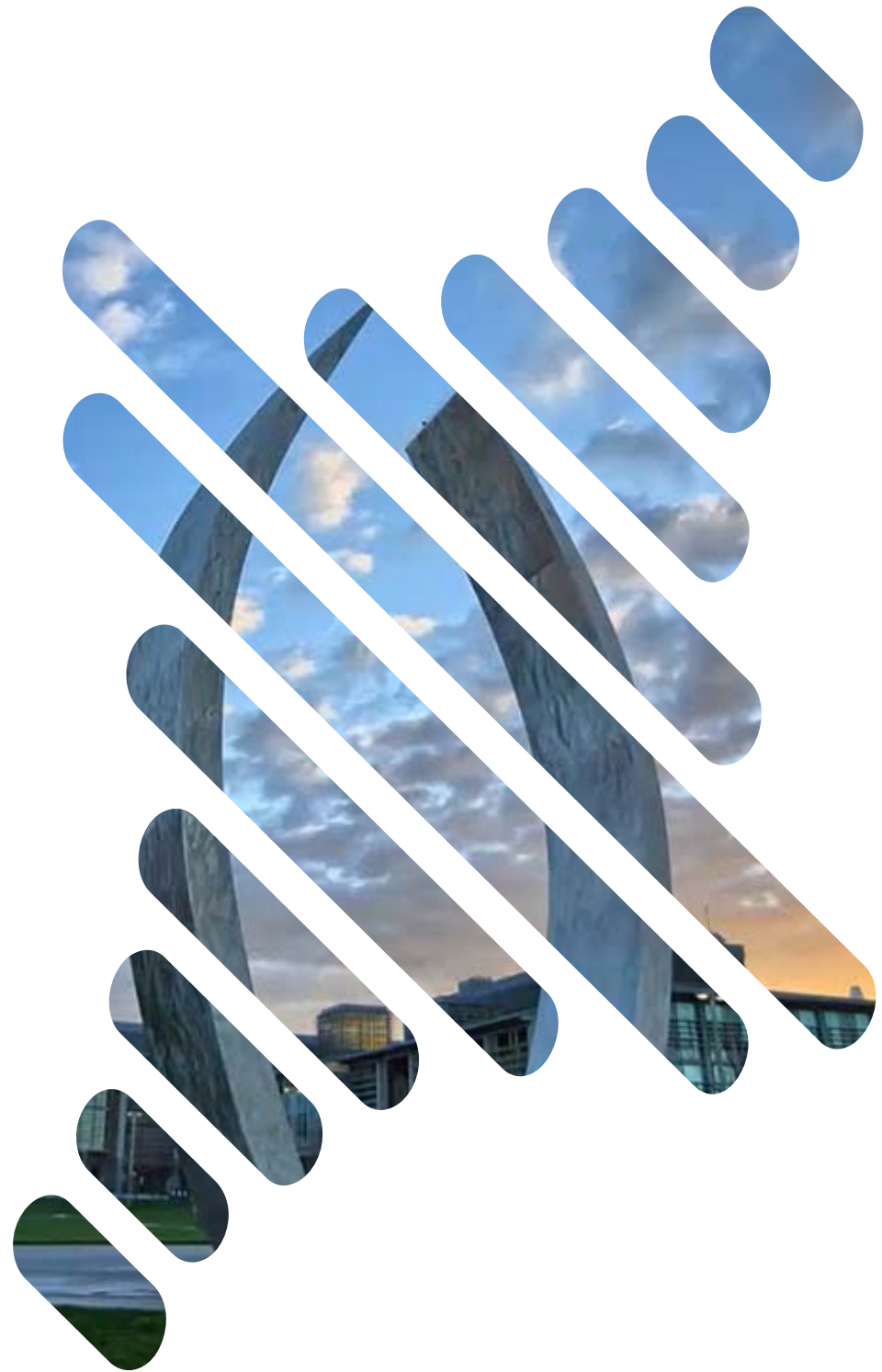


TRANSITIONS

.....

Welcome to the 2017 Student Affairs All
Staff Summer Convocation, featuring
images and interviews from *Transitions:*
Portraits of a Decade-Long Journey a
landmark documentary photography
project by Roger J. Wyan.



TRANSITIONS

Sanjeev Chahal



WELCOME

Dr. Charles Nies joined UC Merced in 2006, as our Associate Vice Chancellor & Dean of Students.

In 2016, Charles became the second Vice Chancellor of Student Affairs at UC Merced.

As a faculty member, Charles has taught undergraduate and graduate courses in leadership theory, organizational theory, student development and social-identity development.

Nies earned his bachelor's degree from the University of St. Thomas as a double major in psychology and theology. He received an M.A. degree in counseling psychology and a Ph.D. in educational leadership/leadership theory from Washington State University.



CHANCELLOR DOROTHY LELAND (& Chance!)

Chancellor Leland joined UC Merced in 2011 so, during her six years on campus, many of you have come to know the Chancellor well – what you might not know is that the Chancellor is an avid amateur photographer and each of the three images below were taken by Chancellor Leland!



TRANSITIONS

Ashley Nand

CAMPUS TRANSITIONS

UC MERCED

Campus formally selected in May of 1995



Campus History

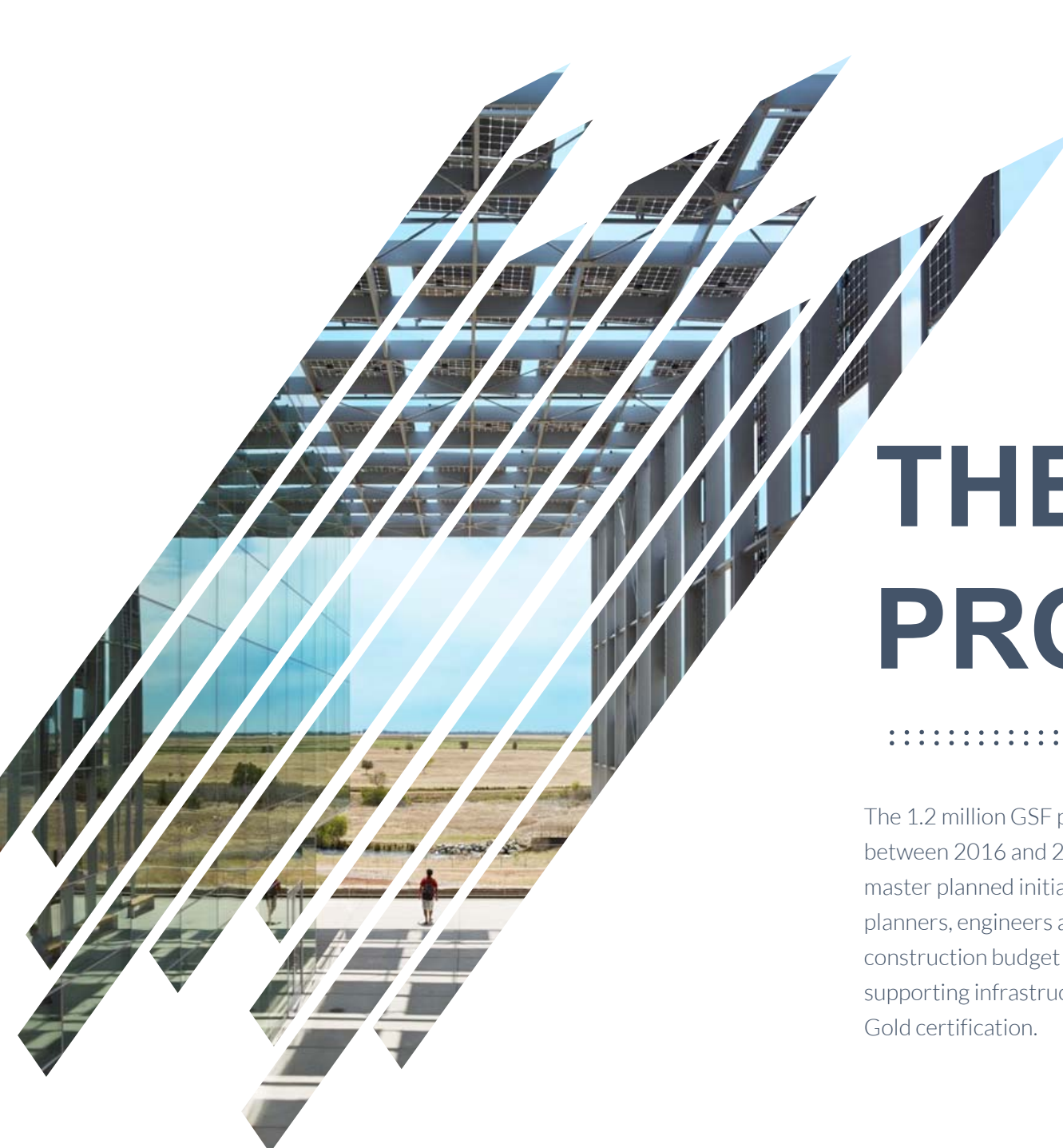
The history of UC Merced dates back to 1988, when the UC Regents first authorized planning for at least one additional campus based on projections of long-range enrollment demand. From an initial review of more than 80 sites in the San Joaquin Valley, 20 were initially advanced for additional study.

→ May 19, 1995

Campus Development

From Then to Now...





THE 2020 PROJECT

.....

The 1.2 million GSF project is being designed and built in three phases between 2016 and 2020. The project is being implemented as a master planned initiative developed by a world-class team of architects, planners, engineers and construction professionals. The design and construction budget is \$1.3 billion and includes 13 buildings and supporting infrastructure. Every building will achieve at least a LEED Gold certification.



TRANSITIONS... UC MERCED STUDENT AFFAIRS SUMMER 2017 ALL STAFF CONVOCATION

The campus is expanding aggressively



First Delivery 2018

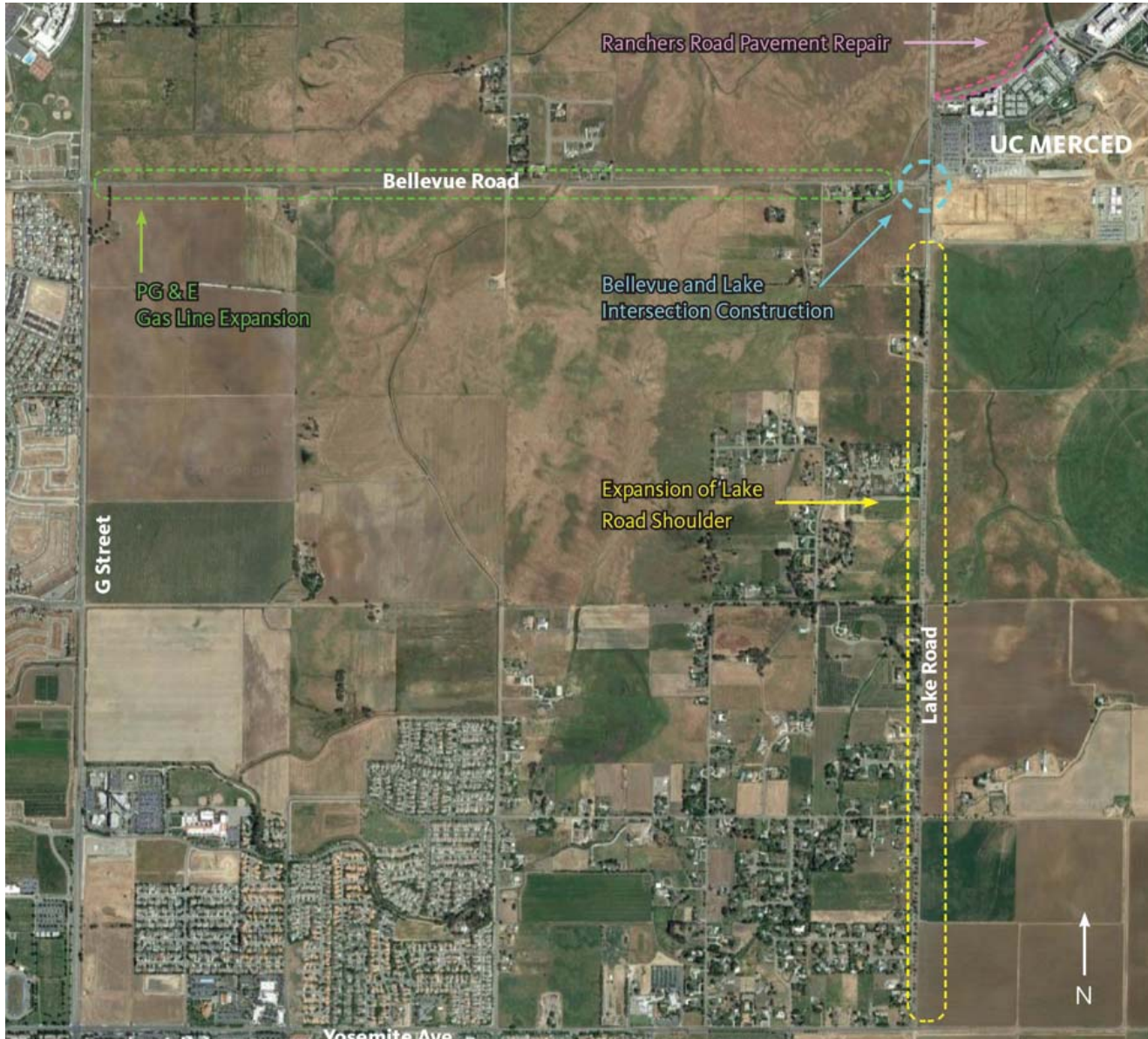
Second Delivery 2019

Substantial Completion 2020

Key buildings and areas labeled on the map include: Social Sciences and Management Building, Central Plant, Science and Engineering 1+2, Kolligian Library, Academic Quad, Wet Laboratory, Dining, Computational Lab and Faculty Offices, Greenhouse, Cottonwood Meadow, Tennis, Basketball Courts, Housing and Student Life, Enrollment Center, Conference Center, Wellness Center, Transit Hub, Pool, Recreation Fields, Competition Field, California Room, and Early Childhood Education Center Expansion.

Near Term Activity

August – November 2017



- Lake Road Shoulder Work
- Stoplight installation and intersection widening at Bellevue and Lake
- PG&E gas line work between G and Lake Road



Future
Parking
opens
in
phases

Lake Road

Bellevue Road

FIRST THREE BUILDINGS OPEN FALL 2018

2020 Project First Phase Delivery



Housing 1A/3B



Dining



Housing 1B



TRANSITIONS... UC MERCED STUDENT AFFAIRS SUMMER 2017 ALL STAFF CONVOCATION



Website

merced2020.ucmerced.edu

Social Media



@merced2020

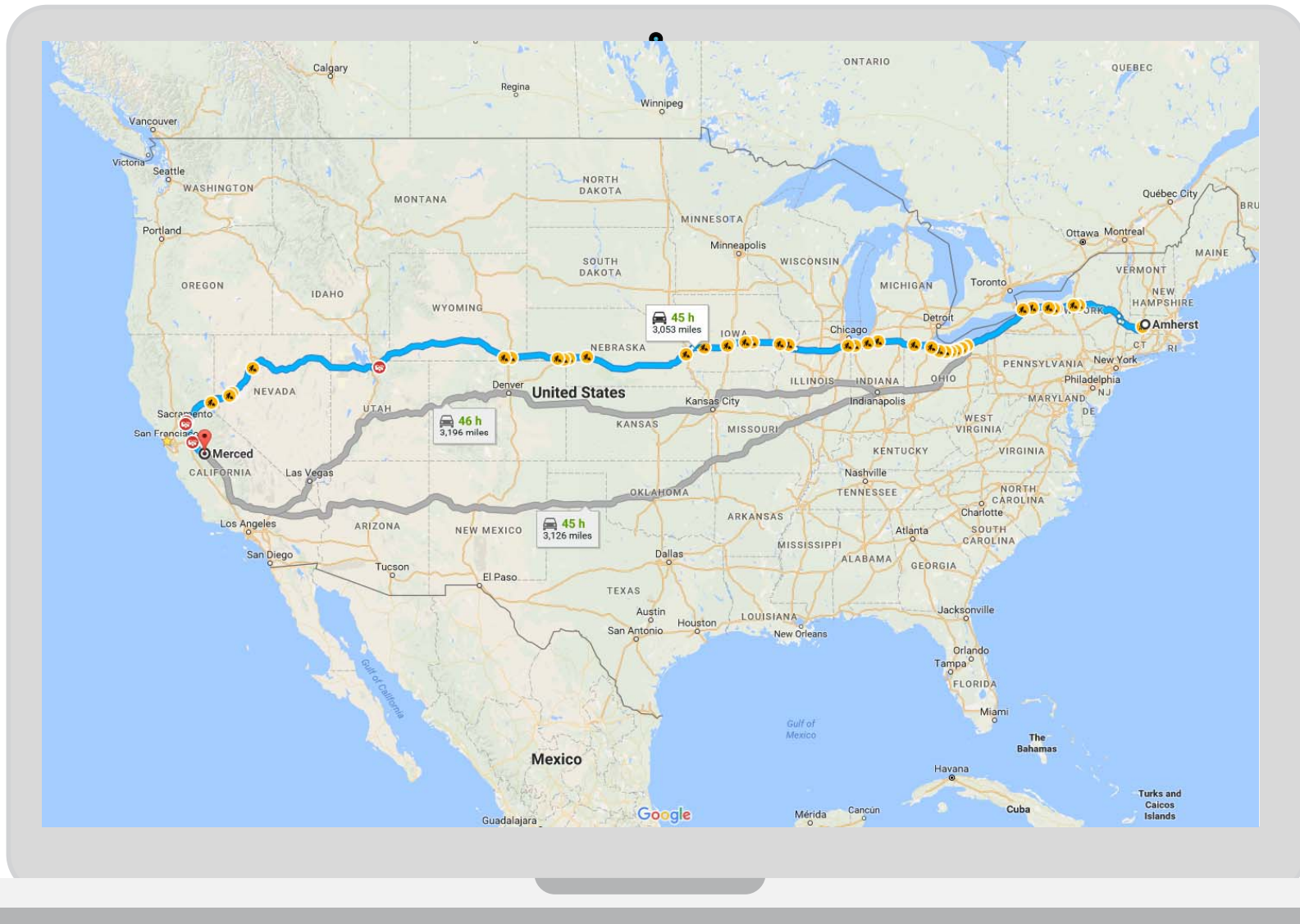


TRANSITIONS... UC MERCED STUDENT AFFAIRS SUMMER 2017 ALL STAFF CONVOCATION

ACADEMIC TRANSITIONS

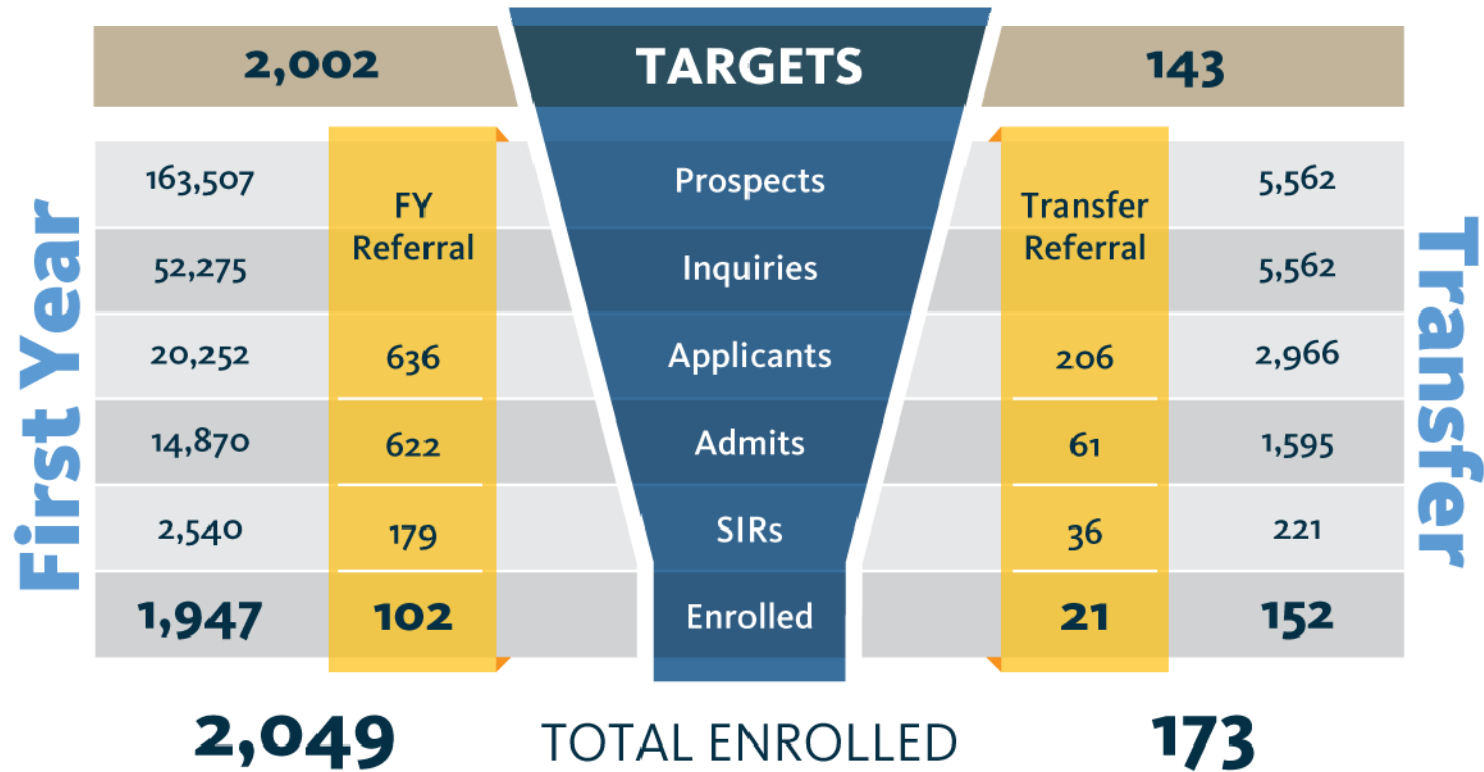
ROAD TRIP!!!

(If Dean Dumont drove 3,000+ miles to come to Merced we're fans!)



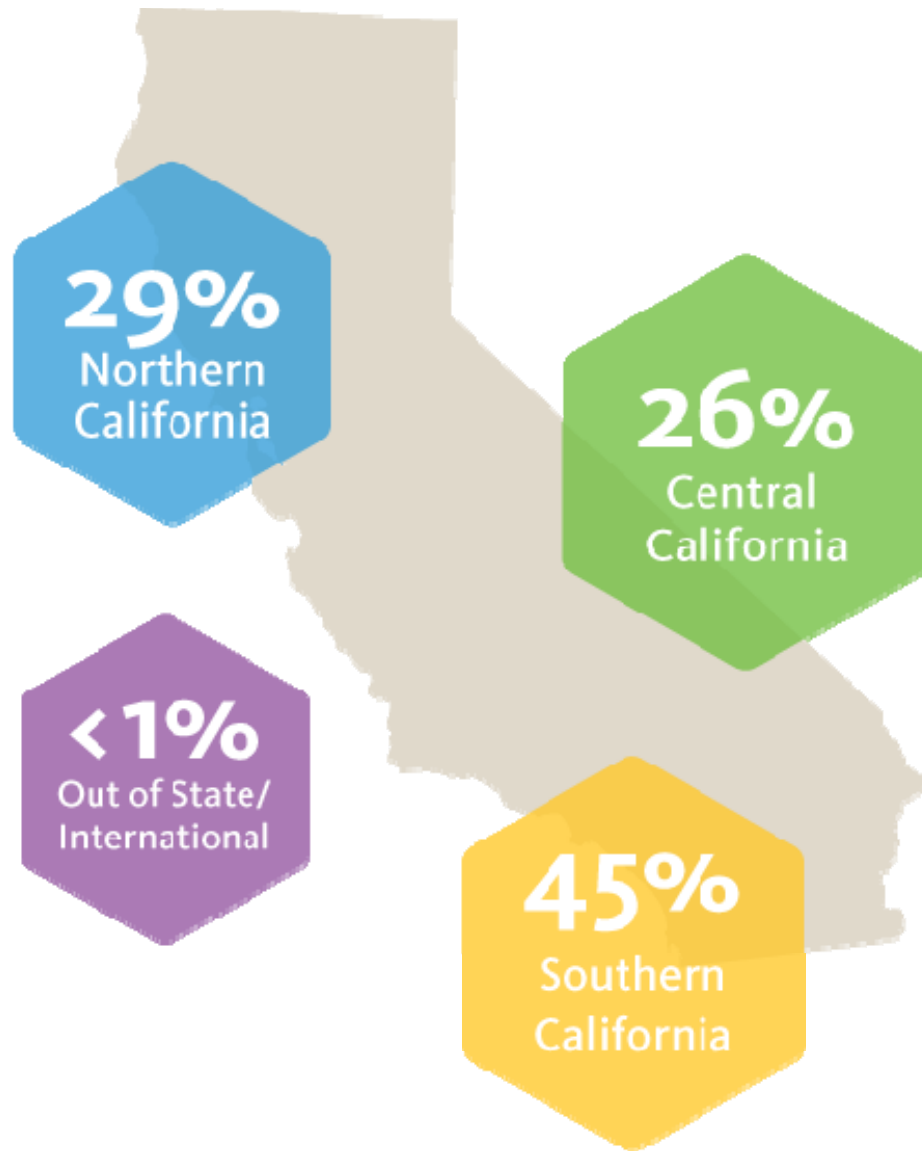
ENROLLMENT TRANSITIONS

ADMISSIONS FUNNEL



UC Merced Ranked No. 5
in the nation out of more than 300
universities for social mobility in the
Washington Monthly 2016 College
Guide.

GEOGRAPHIC STUDENT ORIGINS



Did You Know?

UC Merced ranked No. 8 in
Washington Monthly's 2016
"Best Bang for your Buck:
Western Colleges"

TOP HIGH SCHOOLS, CITIES & COUNTIES

Top High Schools	FY Enrolled
Godinez Fundamental High School (Santa Ana)	23
Golden Valley High School (Merced)	22
Atwater High School (Atwater)	20
Ceres High School (Ceres)	17
Merced High School (Merced)	16
Pitman High School (Turlock)	13
Abraham Lincoln High School (San Francisco)	12
Buhach Colony High School (Atwater)	12
Modesto High School (Modesto)	12
San Fernando High School (San Fernando)	12

Top Counties FY Enrolled
Los Angeles
Merced
Santa Clara
Sacramento
Alameda

Top Cities FY Enrolled
Los Angeles
San Francisco
San Jose

FIRST YEAR STUDENTS

Top 5 Majors for First Year Applicants



#1

Biological
Sciences



#2

Undeclared



#3

Computer
Science &
Engineering



#4

Psychology



#5

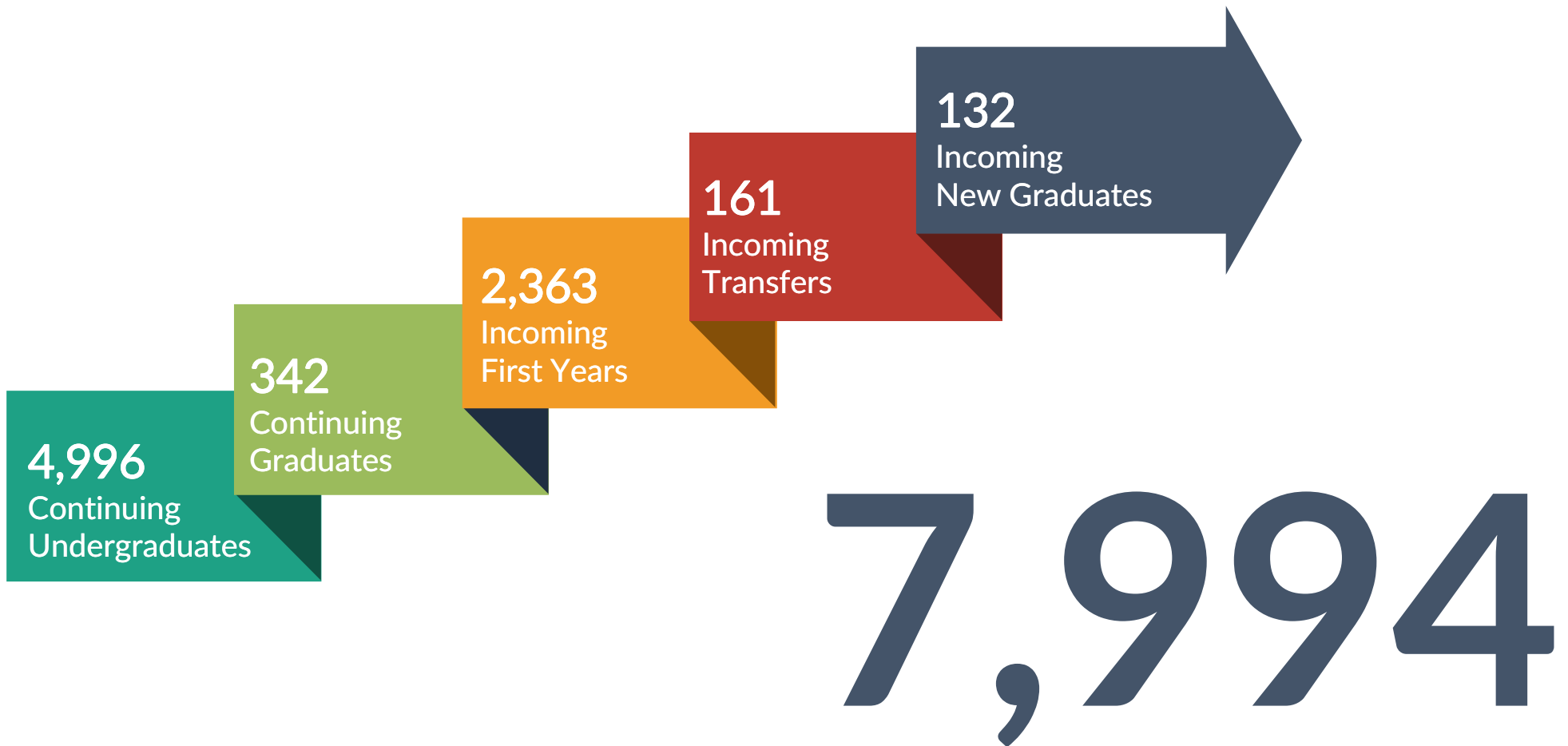
Management
& Business
Economics



One of the Best Public Universities in the Nation

UC Merced is by far the youngest university to appear in the U.S. News & World Report ranking of national universities.

Fall 2017 Enrollments

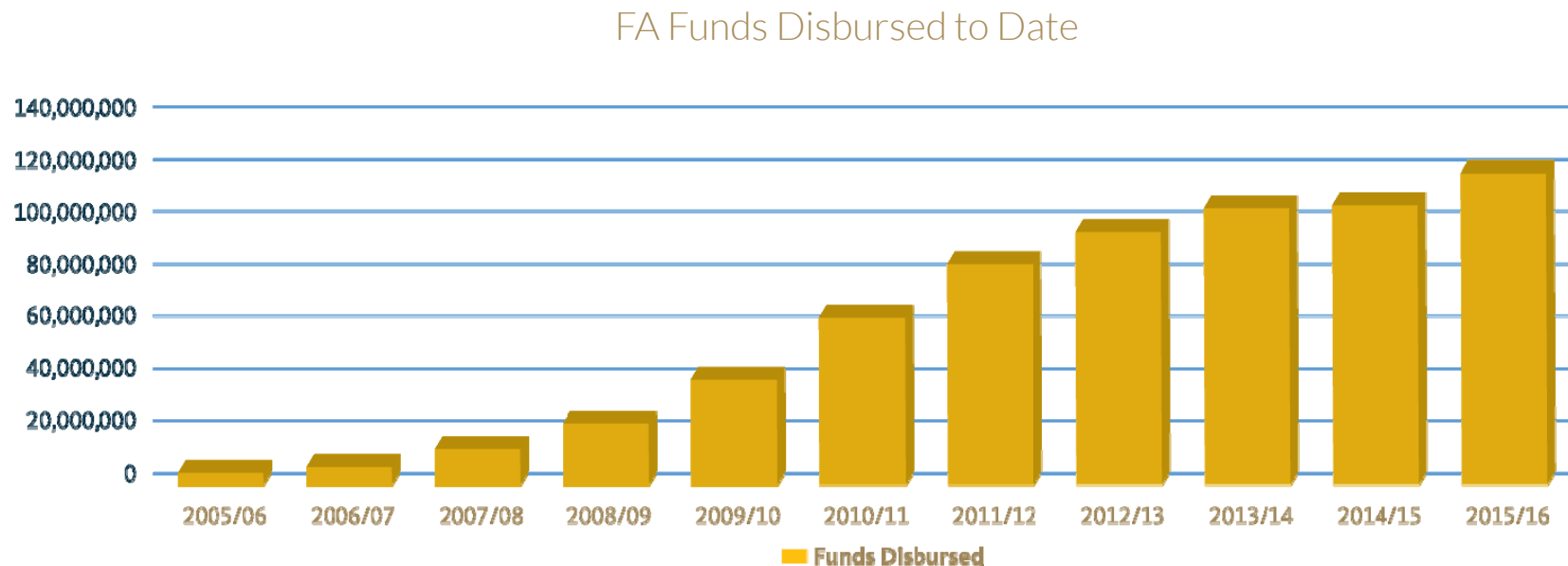


FINANCIAL AID

Financial Aid Awards

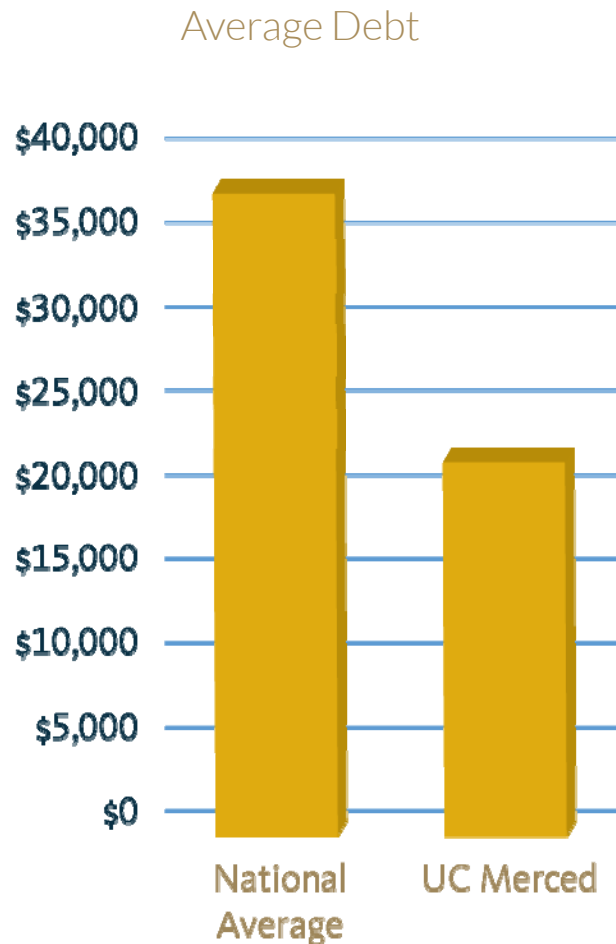
Almost 90% of UC Merced students receive some form of financial aid.

In total, federal, state and institutional financial aid funds disbursed are expected to exceed \$140 million in 2017/18 (not including remissions/waivers and work-study).



STUDENT BORROWING

In 2015/16, the average UC Merced student loan debt at graduation was \$21,180. This is 43% less than the national average of \$37,172 according to U.S. News and World Report.



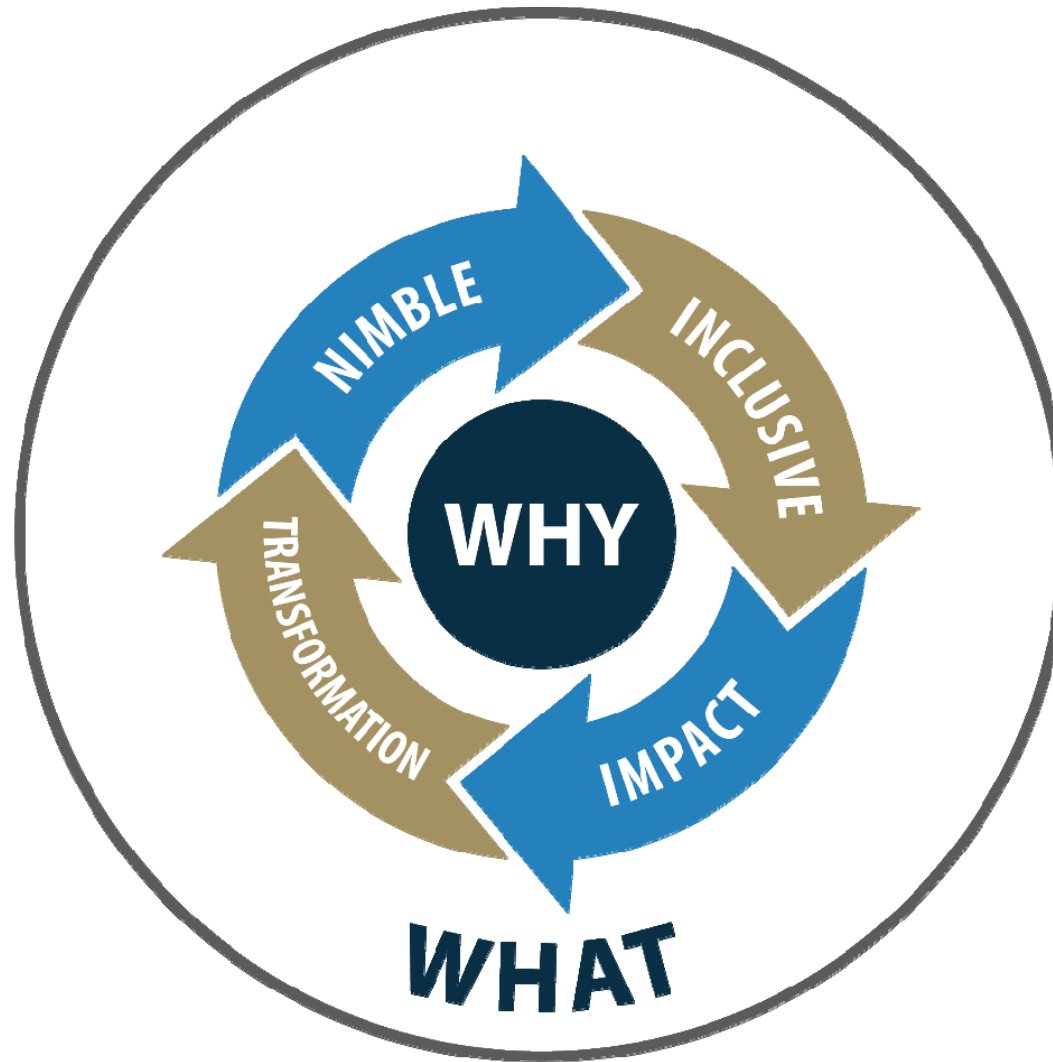
UC Merced ranked No. 8 among all public schools nationally in Goodcall's "2016 Best Schools for Scholarships"

UC MERCED EXTENSION

- Multiple Subject Teacher Preparation Program
- Degree Completion Proposal
- Open University (concurrent enrollment)
- Individual Courses e.g., Drone Courses
- Online Learning (partnership with UC Irvine)
- Continuing Education Units (CEUs)
- Corporate Partners
- English Language Courses and/or Program
- Certificate Programs
- Test Preparation e.g., CSET for Teachers

OUR
WHY

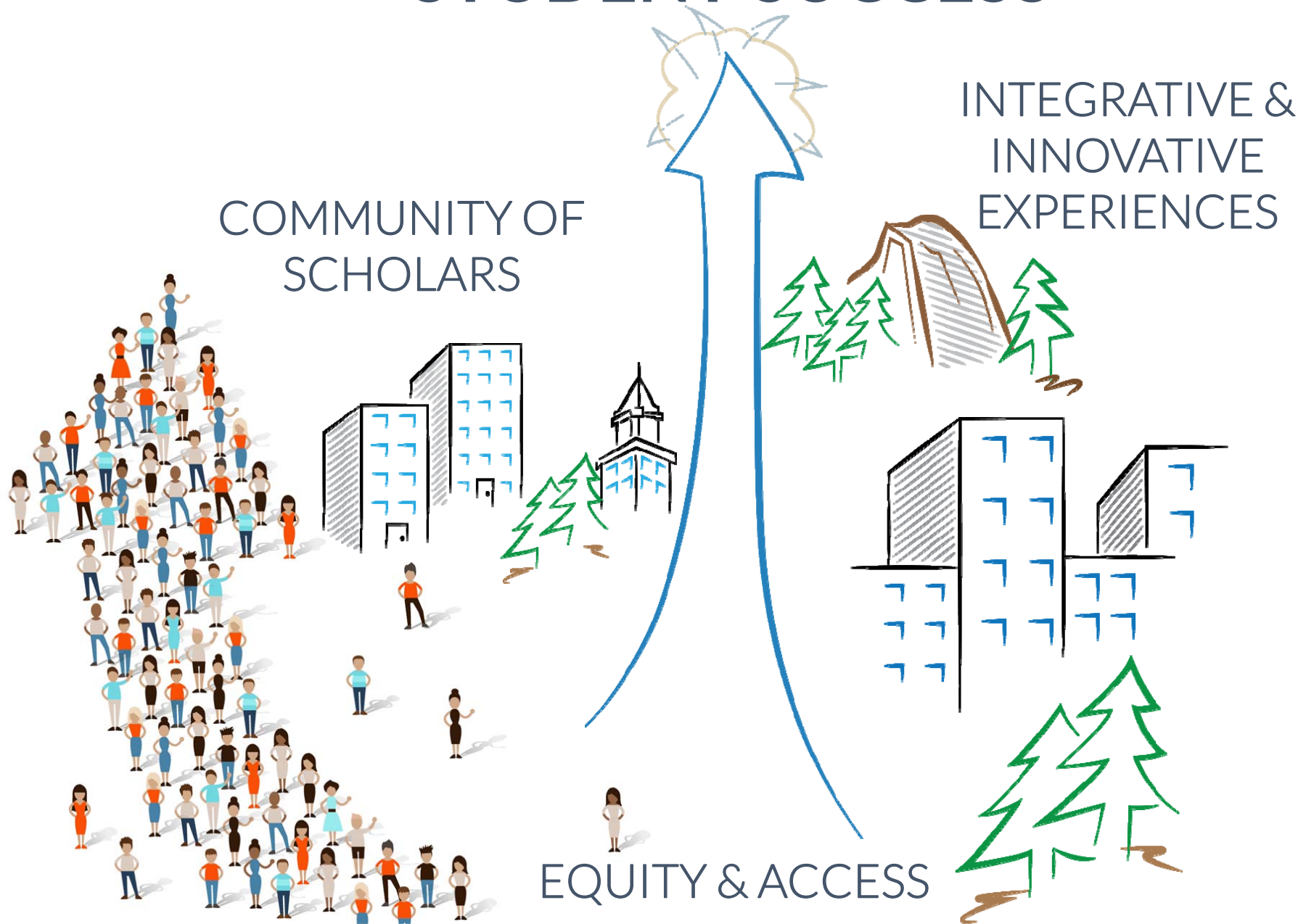
Our **WHY**, HOW & WHAT



"All organizations start with WHY, but only the great ones keep their WHY clear year after year."

Simon Sinek

STUDENT SUCCESS



PREPAREDNESS TRANSITIONS

TRANSITIONS

Efferman Ezell

Center for Educational Partnerships

Established in 2002 to create a “pipeline seal” to create seamless transitions for students from K-12 to higher education





We recognize that our system is inequitable by design and we vigilantly work to confront and interrupt inequities that exist to level the playing field and provide opportunities for everyone to learn, grow and reach their greatness.

SCUSD CORE VALUE

Equity and Access Theory of Change



Equity & Access Guiding Principle

*All students are given an equal
opportunity to graduate
with the greatest number of
postsecondary choices from
the widest array
of options*

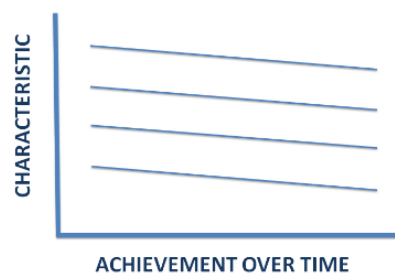
Every system is perfectly designed
to get the results that it gets

Outcome Patterns

Impotent Instructional Culture



Instructional Culture that Sheds Knowledge



Equal Performance Culture



Divergent Performance

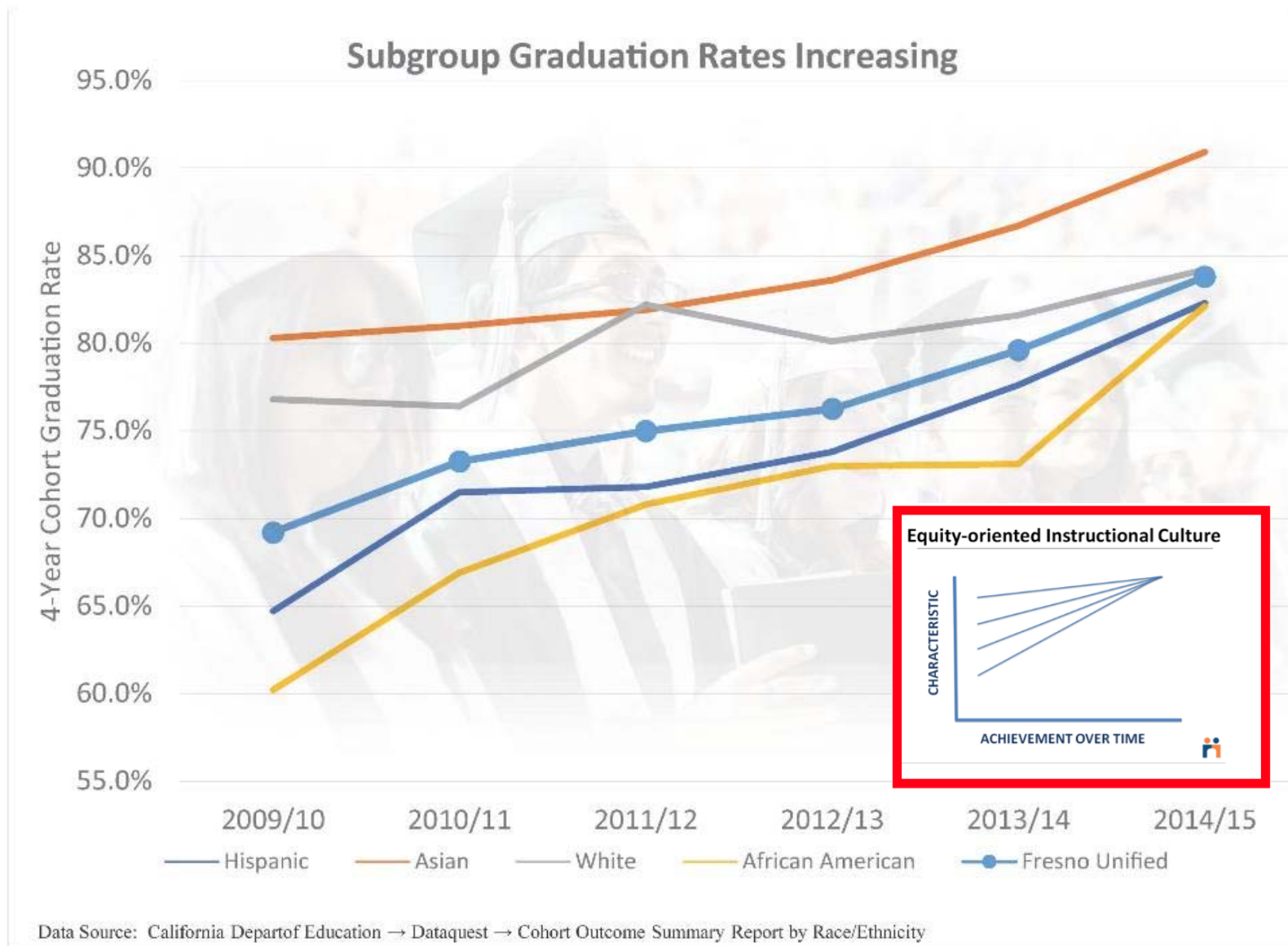


Convergent Performance Culture



Equity-oriented Instructional Culture





See the system that produces
the current outcomes

What is the gap to close?



Equity and Access Theory of Change



"It's always about everything, but not always with equal intensity and focus"

Mindset Shifts

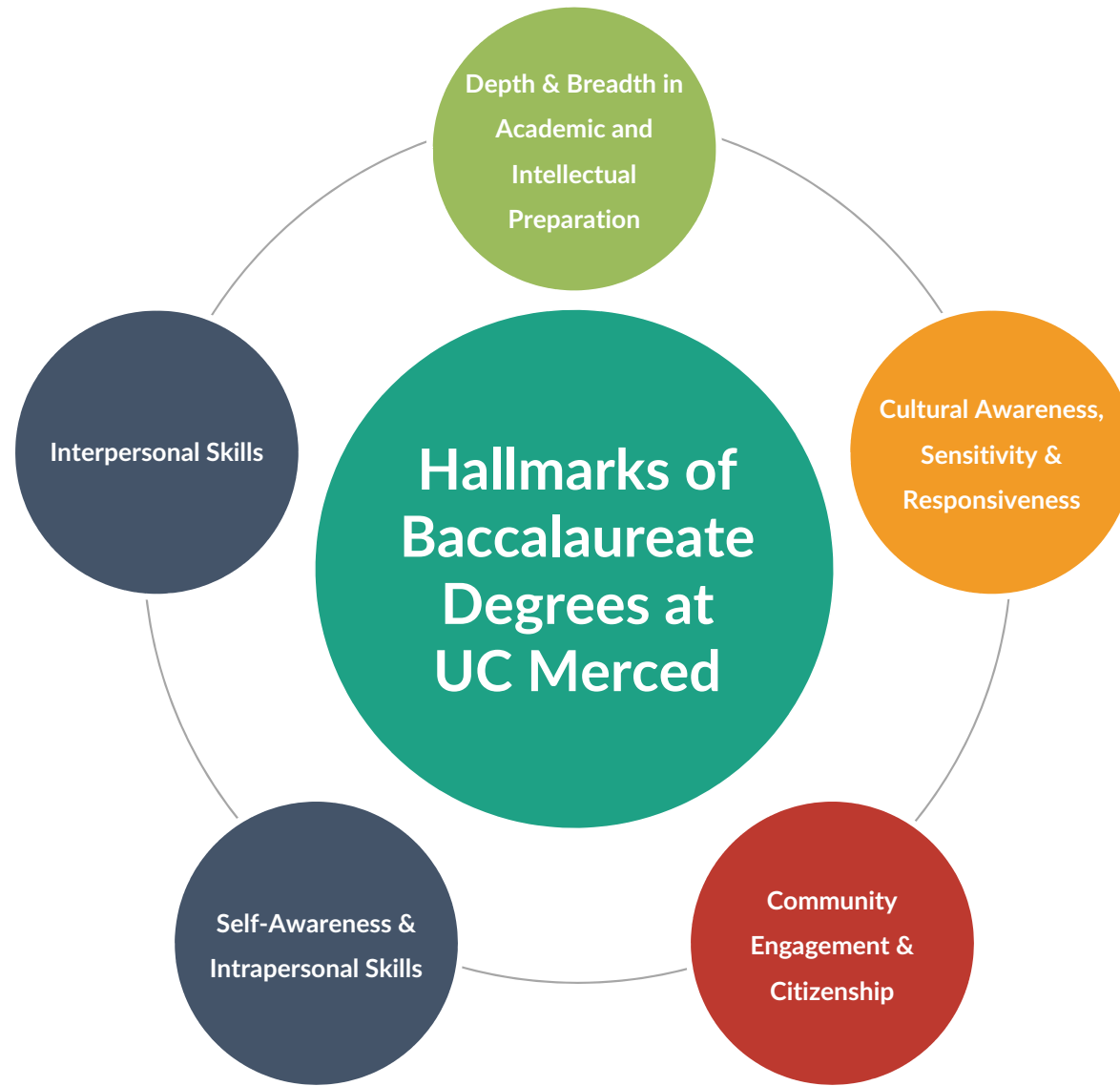
- “Smart Talk Trap” - When confronted with a problem, people act as if discussing it, formulating decisions, and hashing out plans for action are the same as actually fixing it
- **Avoiding Solutionitis** – “Solutionitis is a form of groupthink in which a set of shared beliefs results in an incomplete analysis of the problem and fuller consideration of potential problem-solving alternatives.”

Mindset Shifts

- Embrace “check and balance” philosophy to ensure that “gaming/downdrafting” practices, procedures, traditions are identified in order to assess their continued use
- Embrace transparency and continuous review of data BY STUDENT, BY NEED, BY INEQUITY
- Display data in real-time in order to trigger moral calls to action irrespective of parent/guardian levels of empowerment and advocacy

CURRICULAR TRANSITIONS

What is the Meaning of a UC Merced Degree?



LEADERSHIP, SERVICE & CAREER TRANSITIONS

TRANSITIONS

Matt Siordia

Community Engagement Center

Facilitating Student Engagement with Our Community



3,000

UC Merced students participating in civic or community projects



7,000

Hours of community service projects completed by UC Merced students



15

Merced County schools where our students tutored, mentored & coached.



2,000

Elementary, middle & high school students supported by programs.

Margo Souza Leadership Center

The Margo Souza Leadership Center serves as an accelerator for students' leadership development and provides them with a way to engage with and practice leadership concepts with their peers.

Leadership is not
positional

Leadership is
about serving
others

Self-awareness is the
key to leadership
development

The Goal

To develop General Education ready programs desired for deep learning

Yosemite Leadership Program

The Yosemite Leadership Program (YLP) provides an intensive “leadership lifestyle” experience to students where participants develop a sense of personal leadership talents, practice those talents and develop skills in a variety of team-building and outdoor experiences.



LSC SPACE TRANSITIONS

Who in LSC is Moving Where and Why?

01

Margo Souza Leadership Center

The Margo Souza Leadership Center is moving to KL 350 by the start of the Fall 2017 term.



02

Yosemite Leadership Program

Because we didn't want the MSLC to feel lonely, YLP will be joining them in KL 350 – a "Leadership Suite."



03

Community Engagement Center

The Community Engagement Center will be relocated to KL 352 – once the copiers are cleared out.



04

Food Security Programs

Our Global Food Initiatives and CropMobster Programs will be keeping the CEC company in KL 352.



HEY! WE'VE GOT PROGRAMS ON THE THIRD FLOOR NOW!

The Chancellor's move off campus created a series of space moves that has freed up additional space critical student needs on the campus – and Leadership, Service & Career will house three core programs on the KL Third Floor.

STUDENT LIFE TRANSITIONS

TRANSITIONS

David Do

About Us

Why We Are the Office of Student Life

OUR VISION

The Office of Student Life inspires and empowers UC Merced students to become transformational leaders of positive social change

UNIVERSITY OF CALIFORNIA, MERCED
OFFICE OF STUDENT LIFE

IDENTITY | INTEGRITY | INVOLVEMENT



The Core Pillars of OSL



IDENTITY

Fostering connections and meaningful conversations to build community related to intra/intercultural identity exploration and development opportunities



INTEGRITY

Developing decision making skills, learning to evaluate complex choices, and engaging with systems and individuals with integrity is integral to becoming a global citizen



INVOLVEMENT

Creating co-curricular and extra-curricular experiences which engages and fosters student development, resulting in a vibrant campus culture that enhances the collegiate experience.

TRANSITIONS

Renee Vargas

Multiple Dimensions of Identity

Application of Intersectionality



Sexual Orientation

Ethnicity

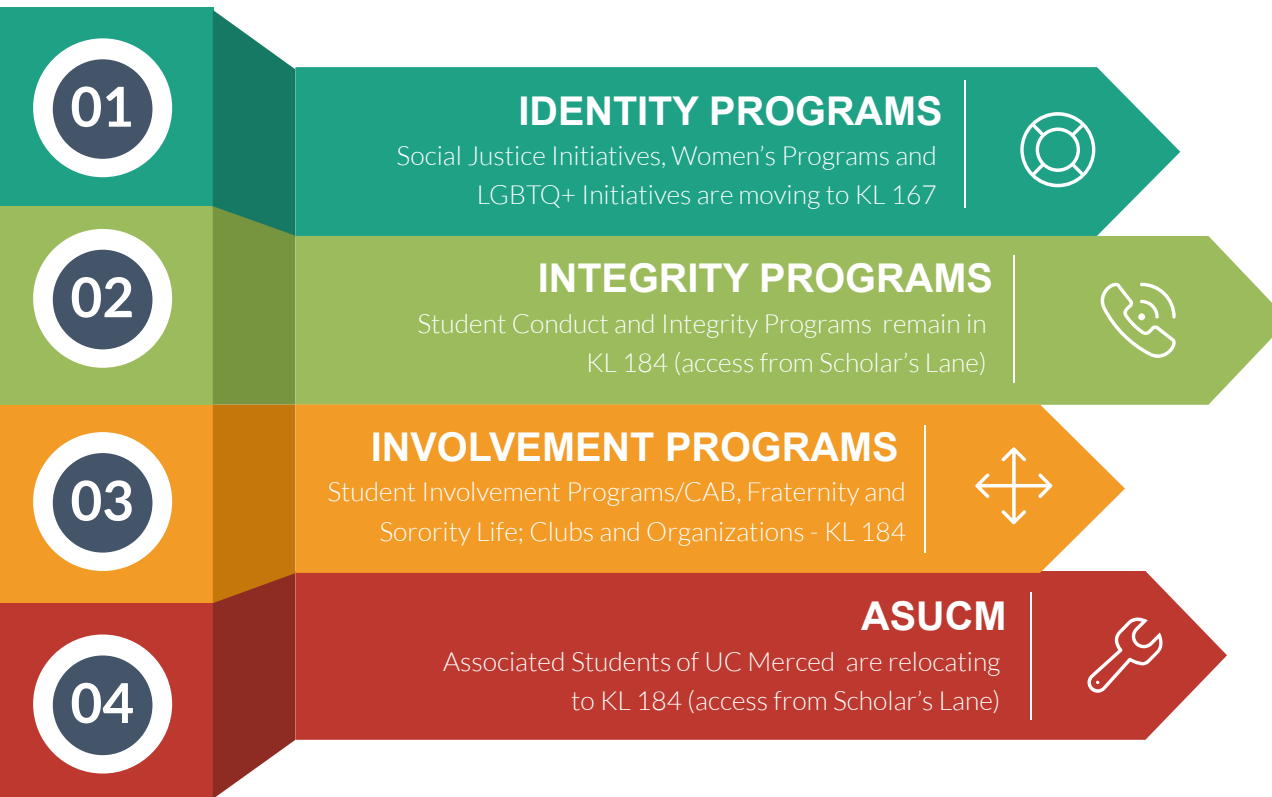
Culture

Socio-economic Class

Religion

OSL SPACE TRANSITIONS

(Yes, You've Seen this Slide Before and We're Using it Again...)



THERE'S A WHOLE LOT OF MOVING GOING ON....

The impetus for most of the space moves within OSL are driven by two factors – the need to better support the emerging cultural centers on campus as well as finding a more robust and higher profile space for the Associated Students of UC Merced

SUCCESS TRANSITIONS

BRIGHT SUCCESS CENTER

Empowering students to be successful in their academic and personal development - both in UC Merced and beyond!



TRANSITIONS

ASCEND, DARTS,
ORIENTATON, STEP



LEARNING

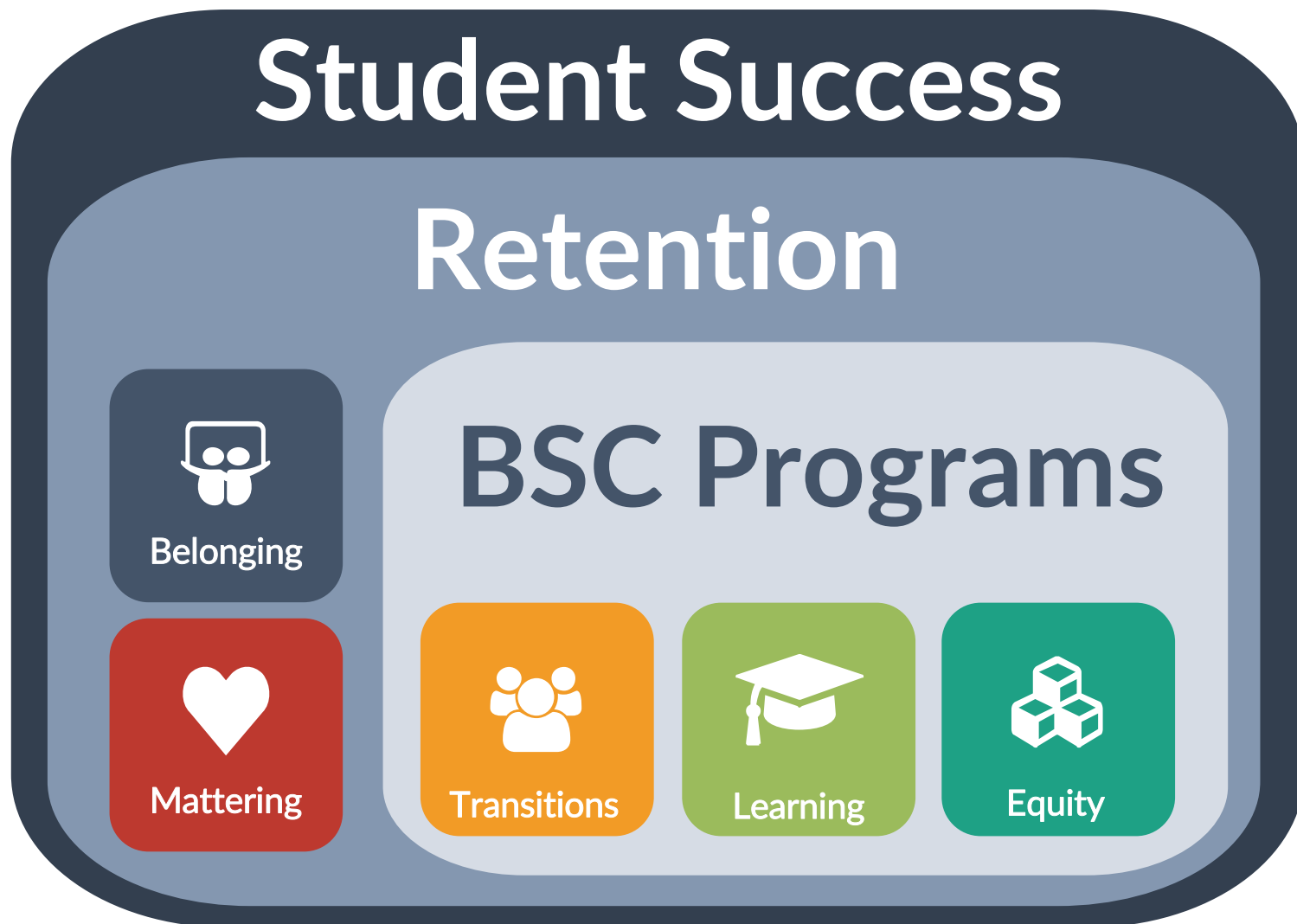
DISABILITY, PALS, SMP,
SUMMER BRIDGE



EQUITY

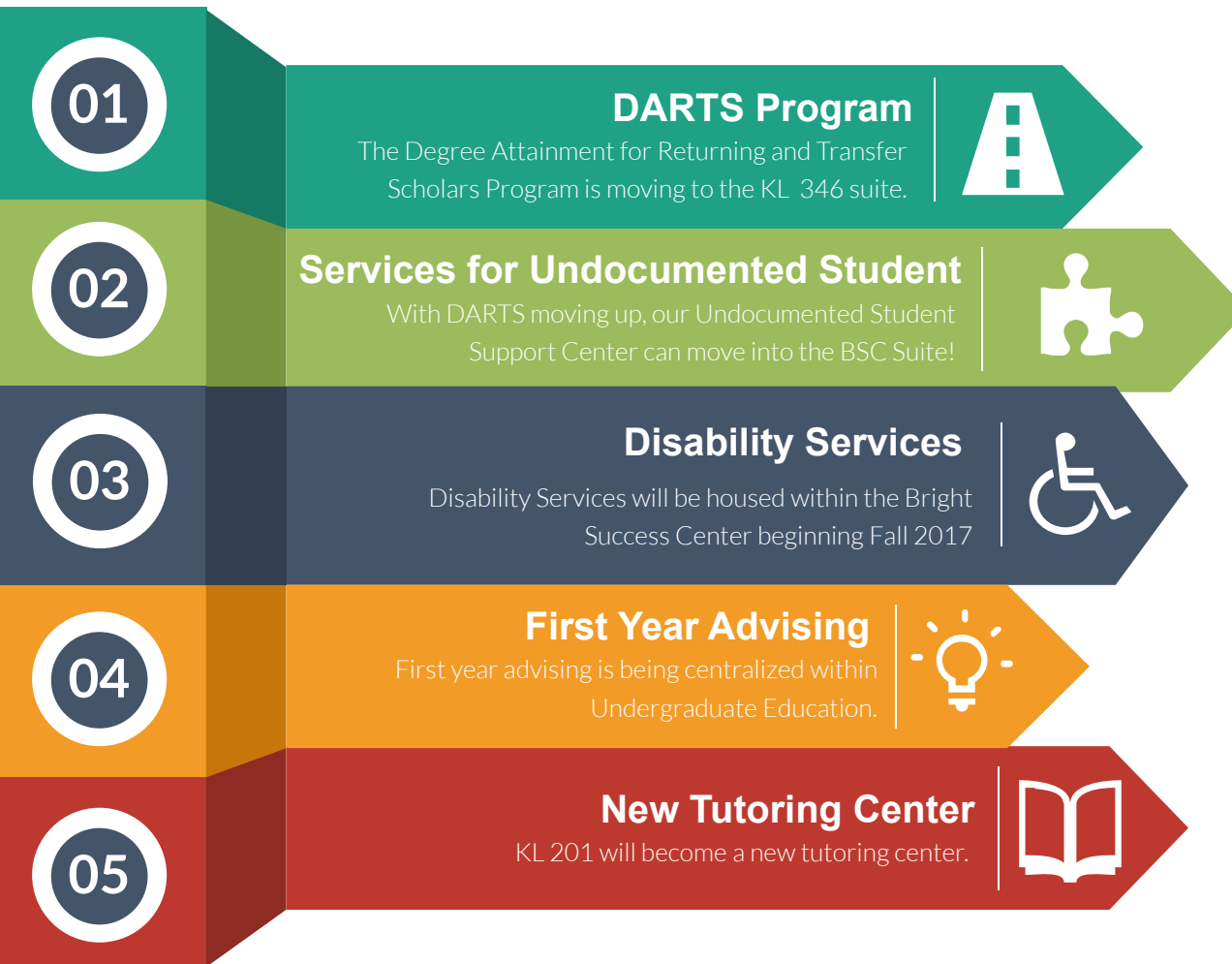
FIAT LUX, GUARDIAN SCHOLARS,
UNDOCUMENTED STUDENTS

Our Students are Capable, Smart
& They are **Swimmers**



BSC SPACE TRANSITIONS

(Yep. Again. Third Time is a Charm Right?)

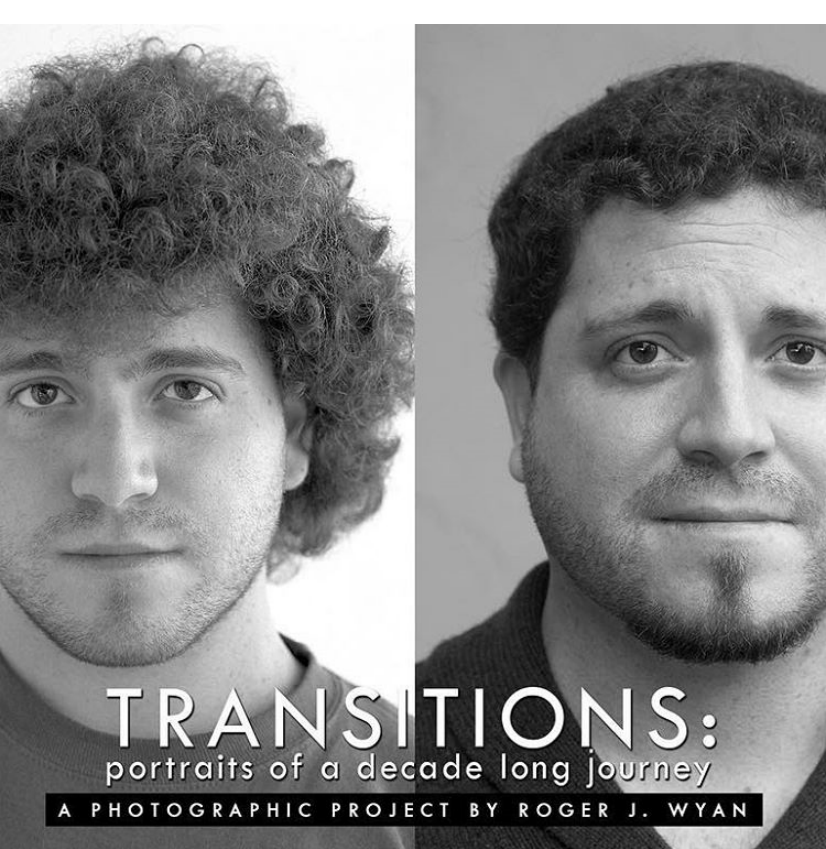


WE HAVE PROGRAMS ON THE THIRD FLOOR NOW TOO!

The Chancellor's move off campus has freed up critical space for student support programs based out of BSC – including our DARTS program and our Undocumented Student Support program.

TRANSITIONS

Portraits of a
Decades Long Journey



TRANSITIONS:

portraits of a decade long journey

A PHOTOGRAPHIC PROJECT BY ROGER J. WYAN



TRANSITIONS

Carmen Becerra

THANK YOU

FOR EVERYTHING YOU
DO TO SUPPORT
STUDENT SUCCESS!